

## Psittacus Catalonia, S.L.

C/ Prat de la Riba, 13  
08450 Llinars del Vallès (Spain)  
Tel. +34 93 841 12 67  
Fax +34 93 841 31 16  
[www.psittacus.com](http://www.psittacus.com)  
[info@psittacus.com](mailto:info@psittacus.com)

לפרטים והזמנות:

### TOO-KEE-YA

[www.tukim.net](http://www.tukim.net)  
משרד - 04-6556675 Office  
פקס - 04-64466501 Fax  
[tookeya@psittacus.com](mailto:tookeya@psittacus.com)



PSITTACUS 

PSITTACUS 

New Range

Psittacus Catalonia SL was created to devote its main activity to the psittacine birds (parrots) as avian pets. The company started its activity in 1998 with the development of the African Grey Parrot (*Psittacus erithacus erithacus*) breeding centre.

Since then and up to the present, the company has diversified its operating scope and now devotes special attention to the research and development of specific food for parrots and other avian pets.

Currently, the main working areas within the company are:

- **Captive breeding** of African Grey Parrot.
- Development and marketing of **food for psittacines** under the registered brand name PSITTACUS.
- Carrying out **research studies** in our own R&D premises and together with scientific organizations.
- **Publication** of articles in journals on breeding and care of parrots.
- **Spreading** knowledge on the captive breeding of psittacines.
- **Cooperating** with PSITACULTURA (breeders association) and other non-for-profit organizations focused on helping captive breeding and protecting the wild populations of psittacines.

Our work team is available to our customers and we kindly welcome any suggestions to help us improve the quality of our products and the wellbeing of our birds.

PSITTACUS CATALONIA



# Breeding centre



Psittacus Catalonia has one of the largest parrot captive breeding centres in the EU. We currently have more than 300 pairs of African Grey Parrots in our facilities.

This species was chosen given its outstanding qualities and aptitudes: nice character, intelligence, beauty and the ability to speak making sense. In addition, its size is suitable to use it as a pet bird, it shows a gregarious tendency and its habits are not too noisy.

Our babies are hand-reared since they hatch in order to improve their adaptation to our homes and foster their social character.

All this enables us to breed healthy, docile, familiar with humans and, therefore, excellent pets that will not take long to talk.





The African Grey Parrots in our centre belong to the type original from the Democratic Republic of Congo (former Zaire). The African Grey Parrots belonging to the populations from this area are the heaviest and biggest within the species.

Our breeding centre is completely free of the diseases that affect so many breeding centres around the world: PBFD, PDD, polyomavirus, psittacosis... The preventive tasks of our vets and that of the collaborating analysis and pathology centres ensure continued optimal sanitary conditions.

Pairs are housed in suspended cages and concentrate their reproductive activity in the warmest months of the year, following the natural cycles of our Mediterranean area.

Their diet combines a broad base of our extruded food (*PSITTACUS Breeding High Energy Formula* and *PSITTACUS Maintenance High Energy Formula*) as well as fresh fruit and vegetables, dried seeds and germinated seeds.

Babies and fertile eggs are the final result of our task in the breeding centre. According to the time of year and depending on the environmental temperatures, we artificially incubate the eggs or we let the parents do it themselves.

We have the necessary equipment to opt at any given moment for artificial incubation and hand-rearing from day one.

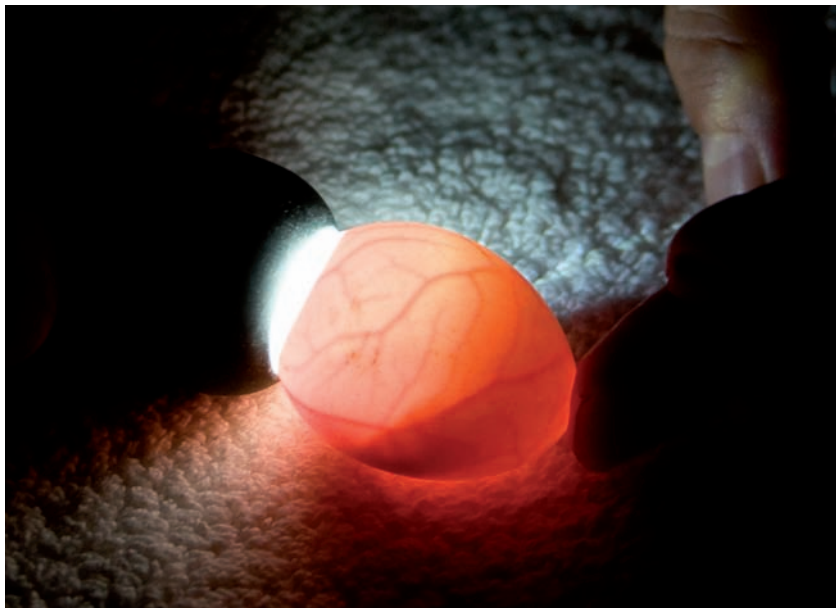
As a whole, the nursery equipment and incubating room include: brooders and incubators, thermoregulated shelves and a wide temperature-controlled room where we leave the trays with the babies in optimal comfort conditions.

All our babies are hand-reared in our nursery since a very early age.

This means delicate, systematic and continuous work for our team of caregivers. The hatching eggs and the babies require maximum attention for long hours that go from early morning to late night hours, every day of the week.









The parrots are delivered to their new owners either while still eating formula or already weaned. We can offer a African Grey Parrot of any age to the person wishing to adopt one. From the youngest, delivered when they are 70 days old, to birds older than 4 months which do not need to be hand-feeding formula and have been trained to a basic level.

We strive to make the adoption process and the adaptation to the new environment as easy as possible. Each chick is delivered together with a kit adapted to the bird's age with all the necessary equipment to care for it: hand-feeding formula, feeding tubes and syringes, extruded food, treats for the training process, and our manual (which helps the new owner welcome and adapt the African Grey Parrot to its new home). Daily, in our nursery, the birds are trained according to their age. The new owner learns how to continue this task. We also offer our customers phone advice and support as needed.

The babies are delivered with the relevant legal documents, ringed (with a closed ring), sexed and with a vet certificate ensuring they have undergone all the tests that guarantee they are in good health conditions and free of PBFD, polyomavirus and psittacosis.



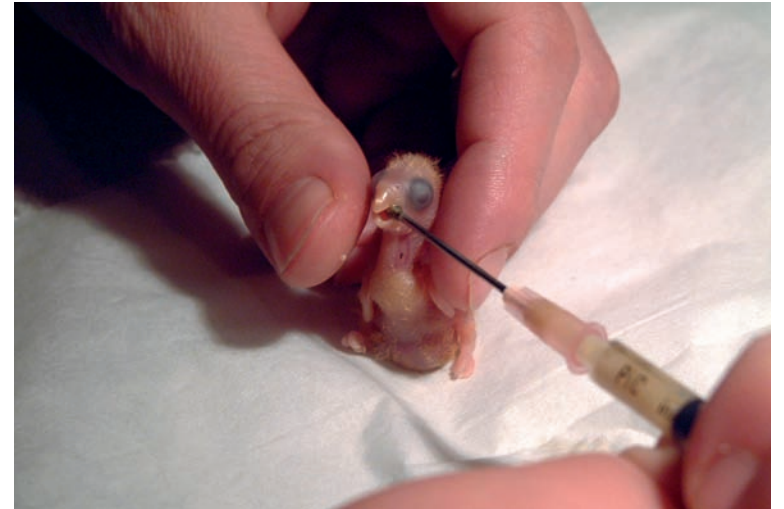




# Research centre



Our research centre offers us the chance to work in several areas: nutrition, behaviour and zootechnics are the main ones. Under the premise of contributing to the improvement of the birds kept captive, our experts develop research programmes in order to come up with new products, improve processes, create new tools, change feeding strategies...





# Food



Our range of products for birds is the result of the research programmes carried out in our breeding centre and collaborating breeding centres.

New products are developed and improve continuously thanks to the systematic interaction between our two main work areas: breeding and nutrition.

The most demanding judges of formula or extruded food are the birds themselves, which appreciate the appeal of our products and show the quality of the ingredients used to make them in their plumage.

We proudly confirm year after year the increase in use of our products.



Our products: extruded foods, hand-feeding formulas and specific products formulated with the foremost criterion of achieving maximum nutritional quality in order to guarantee the best possible health conditions and to foster reproduction in captivity, leaving aside the economic cost of that. For this reason, we only use noble feeding products.

Extruded foods are balanced mixtures that make it impossible for the bird to pick because they are consumed as a whole. They can add up to 100% of the bird's diet, although they leave room to add other foods to offer variety, as long as the extruded food does not amount to less than 70-80% of the total. Fresh fruit and vegetables can be given as a complement without limits. Making the extruded food appealing is fundamental in the case of birds and this is one of our main achievements.

Hand-feeding formulas deserve special mention given the difficulty of their development and formulation. The quality of a formula mix determines the growth of a bird, especially when this is the only food the bird eats since hatching. Our hand-feeding formulas (*Neonatal, High Energy, High Protein, Mini...*) ensure all you can expect from a good formula: very high growth rates, best digestive health, strong immune system, excellent plumage development, easiness to prepare... In other words: quality, safety and appealing taste.







Within the group of specific products, the ones destined to lories are especially worth mentioning (*Lories Gel* and *Lories Nectar*). Two complementary products to introduce a new concept in lories' diet.

Our products contain cereal, pulses, oilseeds, vegetable oils, sugar, dried vegetables (leaves, flowers and fruit), minerals, vitamins and additives to improve the product—in particular, enzymes, the natural antioxidants and prebiotics. Thanks to these components and to the subsequent special preparation procedure, we make the most out of the food and we prevent possible digestive problems (this is an especially important aspect in the case of formula-fed chicks).

Our nutritionists have observed that the selection of the appropriate oils is fundamental in the diet of psittacines.

For this reason, we combine the use of tropical oil, palm oil, with other noble vegetal oils, high in oleic and Omega 6 and Omega 3 fatty acids.

Our feeding products are prepared following an extrusion system. Extrusion is a process by which the previously water-dampened food is “cooked” and expanded. To do so, the food undergoes high pressure and temperature for a brief period of time, and after that, it is dried and cooled.

This process increases the digestibility of the nutrients and sensibly improves the taste of the product. With that, we make the food more appealing, its use more efficient and the droppings reduced. In addition, extrusion is without a doubt the best system to ensure microbiological food safety.



# Psittacus range



The PSITTACUS product range includes complete food products and complements developed to satisfy the needs of psittacine birds, widely known as parrots.

PSITTACUS products are subject to a constant improvement and diversification process thanks also to the research task carried out in our premises (nursery, breeding centre and research centre) and in the breeding centres collaborating with Psittacus Catalonia.



## Maintenance extruded food

Maintenance extruded food is suitable to feed pet and reproductive birds during inactive reproductive stages. Its composition ensures ample fulfilment of the nutritional requirements during these periods.



## High Energy

Suitable for species consuming a great amount of oily fruit or oilseeds in the wild (macaws, African Grey Parrots, senegals...).

The birds approximately eat a daily amount of food equivalent to between 5% and 8% of their body weight. For instance, a African Grey Parrot will eat between 20 g and 40 g of food daily.

Package: 800 g bag and 12 kg bag



## High Protein

Suitable for species consuming a great amount of fruit and seeds with a low to moderate fat content in the wild (amazons, cockatoos, eclectus, conures...).

The birds approximately eat a daily amount of food equivalent to between 5% and 8% of their body weight. For instance, a Blue-fronted amazon will eat daily between 20 g and 35 g.

Package: 800 g bag and 12 kg bag

## Mini

Suitable for smaller size species like cockatiels, lovebirds, broad-taileds, parakeets...

The birds approximately eat a daily amount of food equivalent to 10% of their body weight. For instance, a cockatiel will eat daily close to 10 g.

Package: 450 g bag and 12 kg bag





## Breeding extruded food

Breeding extruded food has been developed to stimulate reproduction. It contains high protein levels with amino acid contents suitable to this stage. Also, it has been formulated paying special attention to the contents in fatty acids and the amount of Omega 6 and Omega 3. The concentration of vitamins and antioxidants of these extruded food is much higher than that of the maintenance extruded food, with the aim to satisfy the higher nutritional requirements during the breeding stage.



## Breeding High Energy

Suitable for the reproductive stage of species of medium and large size which, in addition to the need for a high quality protein-rich diet during this time, benefit from an appropriate fatty acid content rich in palmitic oil (macaws, African Grey Parrots, senegals...).

Contains red palm oil.

Package: 12 kg bag



## Breeding High Protein

Suitable for the reproductive stage of species of medium and large size which, in addition to the need for a high quality protein-rich diet during this time, benefit from an appropriate fatty acid content rich in oleic (amazons, cockatoos, eclectus, conures...)

Contains high-oleic oil.

Package: 12 kg bag

## Eggfood

Formula for small-sized species like cockatiels, lovebirds, broad-taileds, parakeets, budgerigars... Suitable as a complement of the diet during the reproductive stage.

Package: 1 kg bag





## “Super premium” extruded food

Highest appealing taste and nutritional value extruded food. Especially recommended for stages when the parrots have greater nutritional needs (young parrots, parrots with nutritional deficiencies...). In addition, these have been formulated carefully balancing the fatty acids and Omega 6 and Omega 3 contents.



## Omega

This formula can be fed exclusively or as a complement to birds of several psittacine species of medium to large size. It can be used *ad libitum* for macaws, African Grey Parrots and poicephalus. We recommend using it in a restricted way for species that tend to gain weight like amazons, cockatoos, eclectic...

Especially suited as starting food for young parrots.

Package: 800 g bag



## Hand-feeding formula

Suitable for parrot babies and as support diet for sick adults being treated. They have been formulated so as to add up to 100% of the baby parrot diet during the growing stage: from hatching to emancipation. During the weaning stage, hand-feeding formula will be gradually replaced by solid foods.

Check the description of the hand-feeding formulas and choose the most suitable to the characteristics and age of the chick you are raising. As a general rule, medium and large size parrots eat between 7 ml and 10 ml of formula on each feeding for every 100 g of body weight. The small psittacines eat more: up to 16 ml for every 100 g of body weight.

The concentration of solid food recommended when preparing the hand-feeding formula is 20-25%.



## High Energy Hand-feeding Formula

This is a follow-on hand-feeding formula. It is designed to hand-rear the chicks from the moment the quills of the plumage start to show, for the parrot species that require fat-rich diets: macaws, African Grey Parrots, senegals... It contains the most suitable vegetable fat for these species: palm oil.

It also contains papaya, which favours bowel movements. We recommend its use up to emancipation.

Package: 1 kg bag and 5 kg bag





## High Protein Hand-feeding Formula

This is a follow-on hand feeding formula. It is designed to hand-rear the chicks from the moment the quills of the plumage start to show, for the parrot species that require diets not so rich in fat: amazons, cockatoos, eclectus, conures... It contains high oleic sunflower oil, highly digestible.

It also contains papaya, which favours bowel movements. We recommend its use up to emancipation.

Package: 1 kg bag and 5 kg bag



## Mini Hand-feeding Formula

This is a follow-on hand-feeding formula, but can also be used since very early ages. It is designed to feed small size species: cockatiels, lovebirds, Budgerigars, forpus...

It contains whole dried egg.

Package: 1 kg bag



## Neonatal Hand-feeding Formula

This is a start-up hand-feeding formula created to hand-rear since day one the majority of parrot species (African Grey Parrots, amazons, cockatoos, macaws, eclectus parrots, pionites parrots, pionus parrots...). We recommend its use up to the moment when the first plumage quills start to show. From then onwards, we recommend a follow-on hand-feeding formula (High Energy, High Protein or Mini, according to the baby's requirements).

It can also be fed to chicks needing a supplement to the diet they receive from their parents. In addition, it is suitable to treat undernourished chicks.

It contains a high percentage of whole dried egg. It also contains papaya, which favours bowel movements.

Package: 1 kg bag



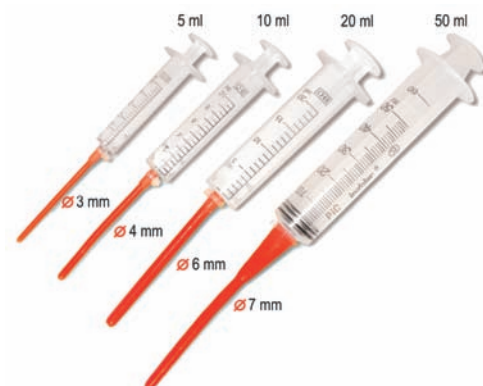
## Tubes

Natural latex soft tubes are the ideal complement to feed formula to psittacines since very early ages.

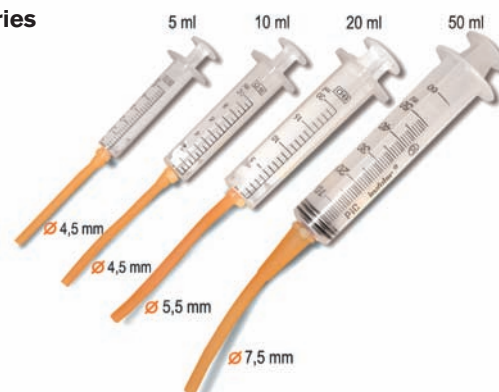
The different diameters of the tubes ensure each species is fed in the most adequate way at each growing stage.

The tubes of the red series have a rounded end.

### Red series



### Yellow series





## Lories Gel

This is a complete food for lories. We recommend giving it dry: the lories will lick the powder when they become adapted to eating food supplied this way. It can also be given as a watery suspension (with a gel-like consistency).

It is important to supplement the Lories Gel with the Lories Nectar. Both products are complementary and they should be made freely accessible and placed in different feeders. Each lory species will take a greater or smaller amount of one or the other product according to their needs.

In the case of these or other fruit-eating species, a simple way to enrich their diet consists in sprinkling the powdered gel on the fruit.

The Lories Gel contains pollen, dried egg, dried hibiscus flower, vegetable pigments, prebiotics... and all the necessary ingredients to obtain maximum quality and taste.

Package: 1 kg bag and 5 kg bag

## Lories Nectar

This is a complementary food for lories. It is a substitute for fruit. We recommend giving it dry: the lories will lick the powder when they become adapted to eating food supplied this way. It can also be given as a watery suspension.




It is important to supplement the Lories Gel with the Lories Nectar. Both products are complementary and they should be made freely accessible and placed in different feeders. Each lory species will take a greater or smaller amount of one or the other product according to their needs.

It contains dried fruit and fructose, the sugar in fruit.

Package: 1 kg bag and 5 kg bag



# PRODUCT GUIDE (Pet range)

African Greys Macaws Senegals	Amazons Cockatoos Eclectus Conures	Cockatiels Lovebirds Broad-tailed Parakeets	Lories	Multi-species
<b>Extruded Food</b>				
				
<b>Hand-feeding Formula</b>				
				
<b>Specific Diets</b>				
			 	



# PRODUCT GUIDE (Professional range)

African Greys Macaws Senegals	Amazons Cockatoos Eclectus Conures	Cockatiels Lovebirds Broad-taileds Parakeets	Lories
<b>Maintenance Extruded Food</b>			
			
<b>Breeding Estruded Food</b>			
			
<b>Hand-feeding Formula</b>			
			
<b>Specific Diets</b>			
			

# ANALYTICAL COMPONENTS

		Maintenance High Energy extruded food	Maintenance High Protein extruded food	Maintenance Mini extruded food	Breeding High Energy extruded food	Breeding High Protein extruded food	Omega extruded food	High Energy Hand-feeding Formula	High Protein Hand-feeding Formula	Mini Hand-feeding Formula	Neonatal Hand-feeding Formula	Lories Gel	Lories Nectar
Metabolizable energy	Kcal/kg	3.400	3.100	3.300	3.400	3.350	3.400	3.800	3.250	3.280	3.870	3.300	3.300
Gross protein value	%	17,0	20,5	15,0	24,0	25,0	24,0	17,5	20,0	21,0	23,0	18,0	6,0
Gross fat value	%	11,0	8,0	7,5	14,0	11,9	14,0	20,0	10,0	10,0	20,0	6,0	1,6
Gross bran value	%	3,4	4,1	2,7	5,6	5,8	5,6	3,2	3,6	3,6	2,8	4,8	2,8
Ashes	%	5,1	5,6	3,8	5,4	5,6	5,4	5,7	6,0	5,1	5,8	4,5	1,7
Moisture	%	7,0	7,0	7,0	7,0	7,0	7,0	7,0	7,0	7,0	6,0	7,0	4,0
Methionine	%	0,4	0,5	0,3	0,6	0,7	0,6	0,5	0,5	0,6	0,7	0,4	0,2
Lysine	%	1,0	1,2	0,8	1,4	1,5	1,4	1,1	1,1	1,2	1,5	1,0	0,3
Calcium	%	0,9	0,9	0,6	0,9	0,9	0,9	0,9	0,9	0,6	0,9	0,8	0,3
Phosphorus	%	0,5	0,5	0,5	0,5	0,5	0,5	0,5	0,5	0,5	0,6	0,5	0,2
Sodium	%	0,05	0,05	0,10	0,05	0,05	0,05	0,08	0,09	0,14	0,20	0,10	0,04
Vit. A retinol	UI/kg	4.700	4.900	4.900	4.500	4.500	4.500	4.100	4.600	4.600	3.600	3.000	700
Vit. A activity	UI/kg	30.000	30.000	21.000	110.000	30.000	110.000	100.000	46.000	36.000	83.000	40.000	20.000
Vit. D3	UI/kg	1.400	1.400	1.100	1.500	1.500	1.500	1.100	1.100	1.100	1.000	1.000	400
Vit. E	mg/kg	340	240	300	500	300	500	300	200	270	300	130	20
Vit. C	mg/kg	100	100	100	200	200	200	210	210	200	300	100	40
Vit. K3	mg/kg	3,5	3,5	3,5	4,4	4,4	4,4	4,6	4,6	4,4	4,6	3,3	1,8
Vit. B1	mg/kg	20	20	20	25	26	25	31	26	26	26	26	26
Vit. B2	mg/kg	16	16	16	20	20	20	21	21	20	21	16	9
Vit. B6	mg/kg	20	20	20	25	25	25	26	26	25	26	20	10
Vit. B12	mcg/kg	80	80	80	100	100	100	105	105	100	105	80	40
Pantothenic acid	mg/kg	16	16	16	20	20	20	21	21	20	21	16	8
Nicotinic acid	mg/kg	100	100	100	125	125	125	131	131	125	131	100	50
Folic acid	mg/kg	3,2	3,2	3,2	4,0	4,0	4,0	4,2	4,2	4,0	4,2	3,2	1,6
Biotin	mcg/kg	560	560	560	700	700	700	740	740	700	740	560	280
Colin	mg/kg	1.700	1.700	1.700	1.800	1.800	1.800	1.500	1.700	1.700	1.300	1100	260
B-carotene (added)	mg/kg	15	20	10	12	15	12	20	20	19	20	22	12
Manganese	mg/kg	66	68	69	70	70	70	58	65	65	51	42	10
Iodine	mg/kg	0,95	0,97	0,99	1	1	1	0,83	0,93	0,93	0,73	0,61	0,15
Zinc	mg/kg	38	39	39	40	40	40	33	34	37	29	24	6
Iron	mg/kg	66	68	69	70	70	70	58	65	67	51	43	10
Copper	mg/kg	7	7	7	7	7	7	6	6	7	5	6	1
Selenium	mcg/kg	142	146	148	150	150	150	140	140	140	140	91	22